

# State of Wyoming Corner Record

(In compliance with the *CORNER PERPETUATION AND FILING ACT*, Wyoming Statutes, 1997, Section 33-29-140, et seq., and the Rules and Regulations of the Board of Registration for Professional Engineers and Professional Land Surveyors)

Reverse side of this form may be used if more space is needed.

Record of original survey and citation of source of historical information (if corner is lost or obliterated). Description of corner monumentation evidence found and/or monument and accessories established to perpetuate the location of this corner. Sketch of relative location of monument, accessories, and reference points with course and distance to adjacent corner(s) (if determined in this survey). Method and rationale for reestablishment of lost or obliterated corner.

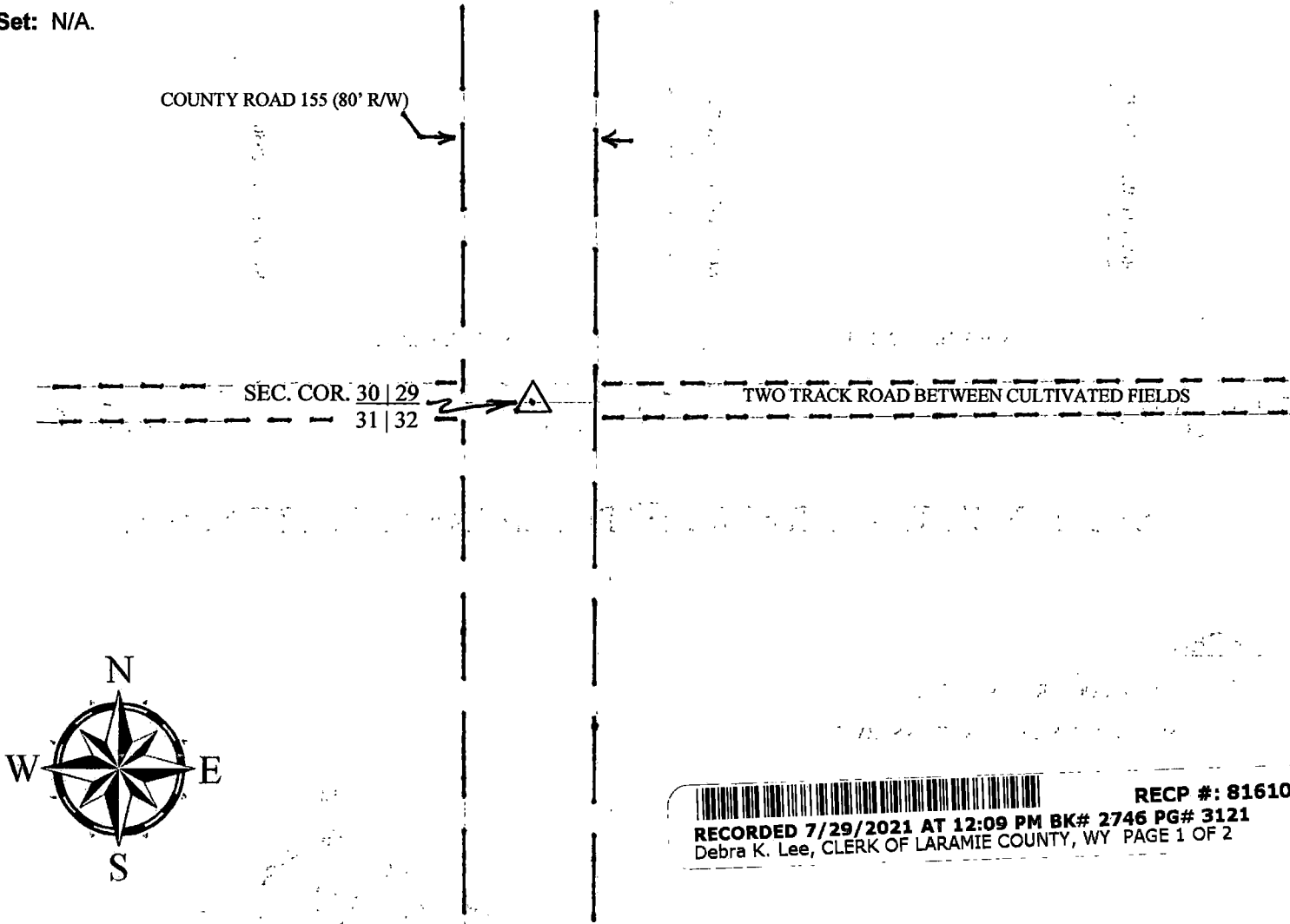
**Section Corner:** Sections 29, 30, 31 & 32, T14N, R61W, 6<sup>th</sup> PM, Laramie County, Wyoming

**GLO record:**

**Found:** No evidence of original GLO monument; 2 1/2" Al. Surv. Cap properly stamped with PLS 5910 and "SSS". Accepted as best available evidence of the original position, and as the historic basis of current surveys in alignment with evidences of occupation.

Also found a No.6 rebar set 0.72' SW of this monument, with no identifying cap. Rejected use as the corner.

**Set:** N/A.



RECP #: 816104  
 RECORDED 7/29/2021 AT 12:09 PM BK# 2746 PG# 3121  
 Debra K. Lee, CLERK OF LARAMIE COUNTY, WY PAGE 1 OF 2

SCALE 1" = 100'

SEE SECTION TIES ON REVERSE

Date of Field Work: July 2021

Office Reference: \_\_\_\_\_

**CROSS INDEX DIAGRAM**

1	2	3	4	5	6	7	8	9	10	11	12	13	14	15	16	17	18	19	20	21	22	23	24	25	
A																									A
B																									B
C																									C
D																									D
E																									E
F																									F
G																									G
H																									H
J																									J
K																									K
L																									L
M																									M
N																									N
O																									O
P																									P
Q																									Q
R																									R
S																									S
T																									T
U																									U
V																									V
W																									W
X																									X
Y																									Y
Z																									Z
1	2	3	4	5	6	7	8	9	10	11	12	13	14	15	16	17	18	19	20	21	22	23	24	25	

Land Surveyor / Firm / Address

John J. Studley, PLS No. 4828

615 West Dale Blvd.

Cheyenne, WY 82001

Telephone: 307-287-4755

This corner record was prepared by me or under my direction and supervision.  
 SEAL & SIGNATURE

